

HEARING SYSTEM USER GUIDE

Congratulations on Your Choice of Hearing System!

Please read this manual carefully to benefit from all of its features. With proper care and usage your new hearing system will provide years of outstanding performance.

CONTENTS:

Hearing System Components.....	2
Installing the Battery.....	3
Operating Your Hearing System.....	4
Caring For Your Hearing System.....	5
Troubleshooting.....	7
Important Notice for Prospective Hearing Instrument Wearers.....	8
Dispenser Information and Children With Hearing Loss.....	9
Service and Warranty.....	11
Hearing System Record.....	12

HEARING SYSTEM COMPONENTS

DIGITAL SOUND PROCESSOR AND SPEAKER LINK

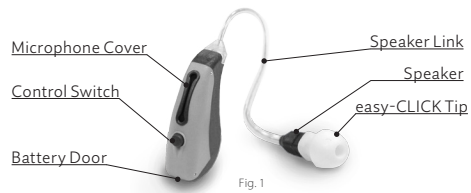


Fig. 1



Fig. 2

OPERATING THE CONTROL SWITCH

Your hearing system may be programmed with different settings that allow you to hear most comfortably. To switch memories, simply press the control switch located at the back of the sound processor (See Figures 1 & 2) until you hear audible tones or beeps which will confirm the setting you have selected. Settings are programmed by your hearing care professional for your individual needs, so it is important for you to understand how your hearing system is programmed.

INSTALLING THE BATTERY

1. Open the Battery Compartment Door by gently swinging it into the open position.
2. Remove the tab from a new #312 size battery.
3. Place the new battery in the Battery Compartment Door with the positive (+) or flat side up as shown in Figure 3.



Fig. 3

4. Click the Battery Compartment Door closed as shown in Figure 4.



Fig. 4

BATTERY INFORMATION

Your hearing system uses one #312 battery. The manufacturer recommends using zinc air batteries.

DO NOT place batteries in the refrigerator or in a dehumidifying device, as the batteries could leak and damage your hearing system.

A word of caution about batteries: BATTERIES CAN BE HARMFUL IF SWALLOWED.

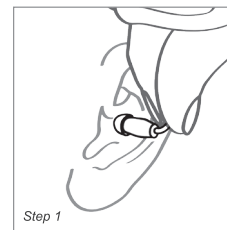
Be sure to keep batteries out of reach of small children, animals or persons of diminished mental capacity. In the event a battery is accidentally swallowed, seek prompt medical attention at the nearest emergency center. In the USA, additional information can be found by calling the National Button Battery Hotline at (202) 625-3333.

OPERATING YOUR HEARING SYSTEM

TURNING YOUR HEARING SYSTEM ON/OFF

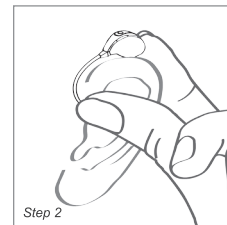
Your hearing system is automatically ON whenever the battery compartment door is closed and a charged battery is inserted. To turn your hearing system OFF, completely open the battery compartment door and leave open. Always leave the battery compartment door open when not in use.

INSERTING YOUR HEARING SYSTEM



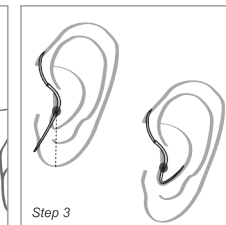
Step 1

STEP 1: Hold the speaker link near the speaker with your thumb and forefinger on a vertical plane. Both the thumb and forefinger should be facing downward and gently insert the easy-CLICK Tip into your ear canal.



Step 2

STEP 2: Position the sound processor behind your ear as shown.



Step 3

STEP 3: If your hearing system is equipped with a Sports Lock, place into your ear as shown.

OPERATIONS SPECIFIC TO WIRELESS FUNCTION

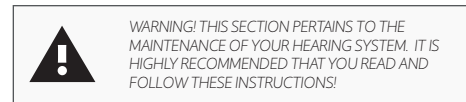
Please ask your hearing care professional if your hearing system is equipped with wireless functionality.

Telephone Use: For those patients with two hearing systems, simply bring the telephone receiver near the ear. The wireless functionality will automatically enable you to hear the phone conversation in both ears.

Control Switch: Wireless functionality can help manage the choice of listening environments. To change the memory, press the control switch on one device, and the wireless functionality will automatically make the same memory selection in the other device.

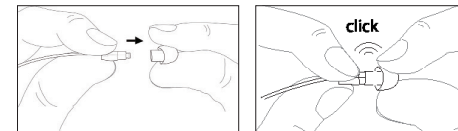
CARING FOR YOUR HEARING SYSTEM

DAILY CLEANING & MAINTENANCE OF YOUR HEARING SYSTEM



Regular maintenance of your hearing system is necessary for satisfactory performance. Your hearing system has been designed to use easy-CLICK tips, which contain a wax filter designed to collect wax and prevent damage to the speaker. Routine replacement of the easy-CLICK tip is necessary in order to prevent damage to the speaker. Tips should also be replaced if the tip appears to be swollen or discolored. Replacement easy-CLICK tips are available through your hearing care professional. Also, visually inspect the easy-CLICK tip to ensure that there are no tears, cuts, or other damage. If you suspect any such damage, remove the tip and replace it with a new easy-CLICK tip, as a damaged tip could possibly come off in the ear. If a tip remains in the ear, do not be alarmed, but contact your hearing care professional or physician for immediate removal.

REPLACING EASY-CLICK TIPS



Replace easy-CLICK tip regularly as directed by your hearing care professional.

STORAGE

For Nightly Storage: Open the battery compartment door, remove the battery and place your hearing system in its protective case. For optimal performance, it is recommended that your hearing system be kept in a dehumidifier. DO NOT place batteries in the dehumidifying device as the batteries could leak and damage your device.

For Extended Storage: Clean your hearing system, remove the battery and store in a protective case in a cool, dry area to reduce the potential for damaging corrosion.

WARNING! Dropping, immersing in water or exposing your hearing system to excessive heat can damage it and void the warranty.

CAUTION: HEARING-RELATED SAFETY APPLICATIONS
Although your hearing system is warranted, reflecting its design quality and reliability, fail-safe reliability is not implied. The hearing system should not be relied upon as a primary safety system in any application where injury or loss of life may result from failure of the hearing device to properly operate. No redundancy or back-up is available in either the power source or the individual and collective circuit functions of the instrument.

TROUBLESHOOTING

NO SOUND

Weak Battery	Replace battery
Earwax Blockage	Replace easy-CLICK tip
Component Problem	Consult your hearing care professional

NOT LOUD ENOUGH

Earwax Blockage	Replace easy-CLICK tip
Component Problem	Consult your hearing care professional
Hearing Loss Progression	Consult your hearing care professional

INTERMITTENT (GOES OFF AND ON)*

Weak Battery	Replace battery
Component Problem	Consult your hearing care professional
Moisture	Allow hearing system to dry out (dehumidifier is recommended)

NOT CLEAR, DISTORTED, STATIC *

Weak Battery	Replace battery
Component Problem	Consult your hearing care professional
Earwax Blockage	Replace easy-CLICK tip

SORENESS (NOTE: Mild soreness is not unusual for the first few days)

Improper Placement	Adjust fit of tip to achieve comfort
Improper Fit of Ear Tip	Consult your hearing care professional
Improper Fit of Speaker Link	Consult your hearing care professional

*If problems persists, consult your hearing care professional.

IMPORTANT NOTICE FOR PROSPECTIVE HEARING AID USERS

Good health practice requires that a person with a hearing loss have a medical evaluation by a licensed physician (preferably a physician who specializes in diseases of the ear) before purchasing a hearing aid. Licensed physicians who specialize in diseases of the ear are often referred to as otolaryngologists, otologists or otorhinolaryngologists. The purpose of medical evaluation is to assure that all medically treatable conditions that may affect hearing are identified and treated before the hearing aid is purchased.

Following the medical evaluation, the physician will give you a written statement that states that your hearing loss has been medically evaluated and that you may be considered a candidate for a hearing aid. The physician will refer you to an audiologist or a hearing aid dispenser, as appropriate, for a hearing aid evaluation.

The audiologist or hearing aid dispenser will conduct a hearing aid evaluation to assess your ability to hear with and without a hearing aid. The hearing aid evaluation will enable the audiologist or dispenser to select and fit a hearing aid to your individual needs.

If you have reservations about your ability to adapt to amplification, you should inquire about the availability of a trial-rental or purchase-option program. Many hearing aid dispensers now offer programs that permit you to wear a hearing aid for a period of time for a nominal fee after which you may decide if you want to purchase the hearing aid.

U.S. Federal law restricts the sale of hearing aids to those individuals who have obtained a medical evaluation from a licensed physician. Federal law permits a fully informed adult to sign a waiver statement declining the medical evaluation for religious or personal beliefs that preclude consultation with a physician. The exercise of such a waiver is not in your best health interest and its use is strongly discouraged. If you elect to exercise your waiver option, you should know that hearing instruments cannot restore normal hearing and will not prevent or improve a hearing impairment resulting from organic conditions. Your success with amplification depends on your hearing loss and individual experiences. In most cases, infrequent use of a hearing instrument will not allow you to obtain full benefit from it. Furthermore, the use of a hearing instrument is only part of hearing

rehabilitation and may need to be supplemented by auditory training and instruction in lip reading.

DISPENSER INFORMATION & CHILDREN WITH HEARING LOSS

WARNING TO HEARING AID DISPENSERS

A hearing aid dispenser should advise a prospective hearing aid user to consult promptly with a licensed physician (preferably an ear specialist) before dispensing a hearing aid if the hearing aid dispenser determines through inquiry, actual observation, or review of any other available information concerning the prospective user, that the prospective user has any of the following conditions:

- (i) Visible congenital or traumatic deformity of the ear.
- (ii) History of active drainage from the ear within the previous 90 days.
- (iii) History of sudden or rapidly progressive hearing loss within the previous 90 days.
- (iv) Acute or chronic dizziness.
- (v) Unilateral hearing loss of sudden or recent onset within the previous 90 days.
- (vi) Audiometric air-bone gap equal to or greater than 15 decibels at 500 hertz (Hz), 1,000 Hz, and 2,000 Hz.
- (vii) Visible evidence of significant cerumen accumulation or a foreign body in the ear canal.
- (viii) Pain or discomfort in the ear.

Special care should be exercised in selecting and fitting a hearing aid whose maximum sound pressure level exceeds 132 decibels because there may be risk of impairing the remaining hearing of the hearing aid user.

CHILDREN WITH HEARING LOSS

In addition to seeing a physician for a medical evaluation, a child with a hearing loss should be directed to an audiologist for evaluation and rehabilitation since hearing loss may cause problems in language development and the educational and social growth of a child. An audiologist is qualified by training and experience to assist in the evaluation and rehabilitation of a child with a hearing loss.

LICENSING

FCC ID: 2ADKC-WHD

IC: 20701-WHD

CONFORMANCE INFORMATION

Devices Registered with Health Canada:
Industry Canada Statement / Déclaration d'industrie Canada
Under Industry Canada regulations, this radio transmitter may only operate using an antenna of a type and maximum (or lesser) gain approved for the transmitter by Industry Canada.

To reduce potential radio interference to other users, the antenna type and its gain should be so chosen that the equivalent isotropically radiated power (e.i.r.p.) is not more than that necessary for successful communication.

This device complies with Industry Canada licence-exempt RSS standard(s). Operation is subject to the following two conditions:

- (1) this device may not cause interference, and
- (2) this device must accept any interference, including interference that may cause undesired operation of the device.

Conformément à la réglementation d'Industrie Canada, le présent émetteur radio peut fonctionner avec une antenne d'un type et d'un gain maximal (ou inférieur) approuvé pour l'émission par Industrie Canada. Dans le but de réduire les risques de brouillage radioélectrique à l'intention des autres utilisateurs, il faut choisir le type d'antenne et son gain de sorte que la puissance isotrope rayonnée équivalente (p.i.r.e.) ne dépasse pas l'intensité nécessaire à l'établissement d'une communication satisfaisante. Le présent appareil est conforme aux CNR d'Industrie Canada applicables aux appareils radio exempts de licence. L'exploitation est autorisée aux deux conditions suivantes :

- (1) l'appareil ne doit pas produire de brouillage, et
- (2) l'utilisateur de l'appareil doit accepter tout brouillage radioélectrique subi, même si le brouillage est susceptible d'en compromettre le fonctionnement.

FCC COMPLIANCE

Your hearing system complies with Part 15 of the Federal Communication Commission (FCC) rules. Operation is subject to the following two conditions:

1. This device may not cause harmful interference.
2. This device must accept any interference received, including interference that may cause undesired operation.

Changes or modifications not expressly approved by the party responsible for compliance could void the user's authority to operate the equipment.

TECHNICAL INFORMATION

Your hearing system contains a radio transmitter using short range magnetic induction technology working at 10.597 MHz. The magnetic field strength of this transmitter is -16.8dBµA/m @ 2m. The emission power from this radio system is well below international emission limits for Human Exposure. The hearing system complies with international standards concerning Electromagnetic Compatibility. Check with your hearing care professional to determine if your hearing system contains a radio transmitter.

SAFETY INFORMATION

WARNING: Although your hearing system has been designed to comply with the most stringent international electromagnetic compatibility standards, the possibility cannot be excluded that it may cause interference with other equipment, such as medical devices. It is also possible that unforeseen interference may occur in the hearing aid due to electromagnetic radiation from other products such as alarm systems, room surveillance equipment, and mobile phones.

Only for two instruments or the use of a remote control:

In some countries restrictions for the usage of wireless equipment exist. Refer to local authorities for further information.

SERVICE AND WARRANTY

Your sound processor and speaker link (collectively, "hearing system") includes a limited warranty against defects in material and workmanship. Please ask your hearing care professional about the duration. All warranty claims must be submitted to Manufacturer with the warranted merchandise within the warranty period. Manufacturer shall repair or replace any defective merchandise covered by this warranty at Manufacturer's sole expense during the Term of the manufacturer's warranty period. All warranties are void if the merchandise (or any part thereof) has been misused, abused, tampered with, or modified in any way, or if the serial number is altered, effaced or removed, or if any unauthorized repairs have been made to the merchandise. Additionally, this warranty will be void if the Speaker is used without an approved tip or wax guard. The easy-CLICK tips used with your hearing system are considered maintenance or service items and are excluded from the manufacturer's limited warranty.

Manufacturer shall not be liable for any special, indirect, incidental or consequential damages in connection with the use of the merchandise or for the breach of any of the obligations owed to the purchaser, or any customer of the purchaser, if any. In the event legal liability of Manufacturer is established for any cause or reason whatsoever, including, without limitation for breach of warranty, the sole and exclusive liability of Manufacturer and the exclusive remedy of purchaser or any customer of the purchaser shall be the recovery of an amount not exceeding the original price charged by Manufacturer to the purchaser for the merchandise.

MANUFACTURER MAKES NO WARRANTY, EITHER EXPRESSED OR IMPLIED, THAT THE MERCHANDISE IS MERCHANTABILITY OR FIT FOR SUITABLE FOR ANY PARTICULAR USE OR PURPOSE. MANUFACTURER MAKES NO OTHER WARRANTY, EXPRESS OR IMPLIED, EXCEPT AS IS EXPRESSLY SET FORTH HEREIN, ALL SUCH OTHER WARRANTIES BEING HEREBY DISCLAIMED.

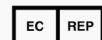
In the event your hearing system needs repair, see your hearing care professional.

This user manual is applicable for HD 225, HD 226, HD 230, HD 250, HD 270, HD 290, HD 350, HD 370, HD 390.

HEARING SYSTEMS RECORD

	LEFT	RIGHT
Purchase Date		
Warranty Term		
Warranty Exp. Date		
Sound Processor Model No.(s)		
Sound Processor Serial No.(s)		
Link Size		
Link Serial No.(s)		
Tip Size		
Battery Size	#312	#312

CONFORMANCE INFORMATION



EUROPEAN AUTHORIZED REPRESENTATIVE:
CEPartner4u, Estdoorlaan 13, 3951 DB Maarn,
www.cepartner4u.eu



With the CE marking SeboTek declares that this hearing instrument is in compliance with the European Directive 93/42/EEC concerning medical devices, as well as Directive 99/5/EC (R&TTE) concerning radio and telecommunications terminal equipment. A copy of the Declaration of Conformity can be obtained from the below address:

SeboTek Hearing Systems, LLC
2488 E. 81st St., Suite 2000, Tulsa, OK 74137, USA
www.SeboTek.com



YY Indicates year of manufacture.



Copyright © 2015 SeboTek® Hearing Systems, LLC - All rights reserved. No part of this publication may be reproduced without permission from SeboTek Hearing Systems.
US Patents 7,139,404; 8,976,991 Other Patents Pending.
© 2015 All Rights Reserved BKT352-F400-A